



artsdrop.co.uk

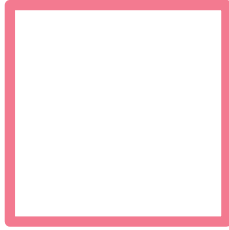
4SEND-Sen

A Spinning Windmill!



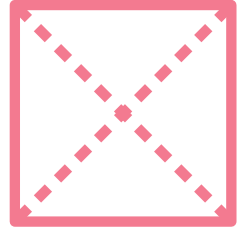
Step 1

Get a square piece of paper



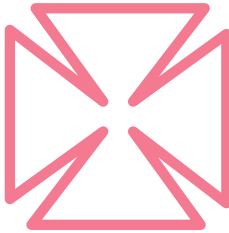
Step 2

Fold and unfold corner to corner



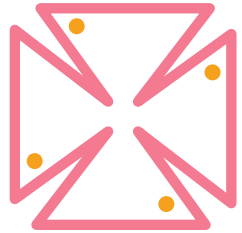
Step 3

Cut down the fold lines but leave a space in the middle.



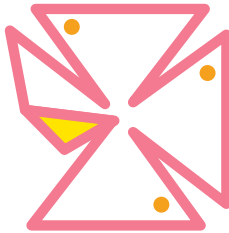
Step 4

Put a little dab of glue in the corners marked.



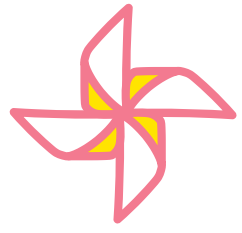
Step 5

Now fold the corners towards the centre



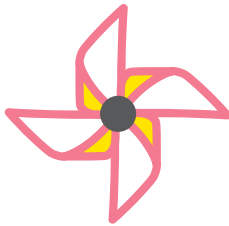
Step 6

Once complete it should look like this



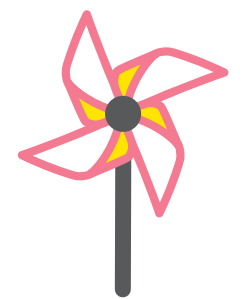
Step 7

Stick a paper dot to the front to secure



Step 8

Use a drawing pin to attach it to a wooden spoon



Now blow and watch it spin!